



STUDY PROGRAMME ENTRY CRITERIA

#SEEYOURFUTURE

KEY INFORMATION



Course choices

Students should have no more than 4 courses on their application. As a Franklin student, they can only study up to 3 (with exceptions for those studying Further Maths, who can study 4). Selecting 4 courses allows them to have 1 course to try as a backup during Taster Day.



Predicated grades

Please encourage students to add all their predicated grades to their application. This is important so we can discuss entry requirements at interview and offer them a place on the right courses.



Student contact information

We ask students to use their personal email instead of school email when applying to Franklin, so we can contact them after they leave school in June.



Interviews

All students must bring their latest school report with their predicted grades and current attendance, so we can offer them an accurate study programme and discuss their offer.

1 ATTEND OUR OPEN EVENTS

APPLY

You can apply through Lincs2, Lincs4U and our website. **Don't forget our first-choice applications close on the 31st March 2026.** If you apply after this date, you won't be guaranteed your first-choice courses and will be classed as a late application.



INTERVIEWS

We receive lots of applications! We'll be in touch as soon as it's your turn for an interview. Interviews take place between **December and June**. Please keep a lookout for emails and texts from us.

After your interview, we will write to you to confirm the outcome.

PERSONAL & PROFESSIONAL DEVELOPMENT (PPD) EVENT

You'll be invited to our fantastic PPD event on **Thursday 30th April**, where you'll have the chance to discover our incredible clubs, societies and trips, plus hear from our Personal and Professional Development teams.



FRANKLIN APPLICANT

JOURNEY

5



TASTER DAY & FRANK FEST July 2026

Taster Day, a chance to experience a day in the life of a Franklin student and Frank Fest, our very own festival featuring activities, music and food.

After your GCSE's, you'll attend two exciting events:

6



GCSE RESULTS DAY

Enrolment begins on GCSE Results Day, **20th August 2026**, so please make sure you are available from this date. We'll be in touch over summer with your next steps which will include, information on your Bridging Work and details on enrolment.

4

KEY INFORMATION

STUDYING A MIXED PROGRAMME

What to expect

By choosing a mixed programme to support your future plans, it is really important to be aware of the different styles of qualifications to ensure you plan your studies during the year. Both types of qualification are two years in length, but due to the different nature, it's important to be aware of key differences.

A Level		Vocational
START OF COURSE, SETTING ACADEMIC FOUNDATION	YEAR 1 SEPT - OCT	START OF FIRST UNIT
FIRST INTERNAL ASSESSMENTS	DEC - JAN	SUBMISSION OF FIRST COURSEWORK UNITS OR FIRST EXAM
END-OF-YEAR MOCK EXAMS	MAY - JUNE	FINAL DEADLINES FOR FIRST-YEAR UNITS
UNIVERSITY/APPRENTICESHIP APPLICATIONS	YEAR 2 NOV - JAN	UNIVERSITY/APPRENTICESHIP APPLICATIONS EXTERNAL ASSESSMENTS
PRE-FINAL EXAM REVISION	APR - MAY	FINAL COURSE WORK SUBMISSIONS
FINAL EXAMS	MAY	FINAL MODERATION

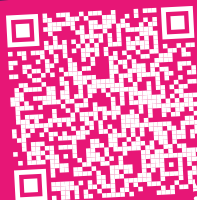
A Level Courses

...involve a longer period of learning with fewer assessments throughout the course than vocational courses. Although you will sit mock exams to give you an indication of your current level of performance at checkpoints throughout the year, these mock exams do not contribute towards your final grade. They are however a really important element of the course and give you an idea of your current working grade, helping prepare you for your final assessments. Some A Levels include coursework and practical assessments, which contribute to your final year 13 grade, but A Levels have more emphasis on the final exams, which provides your final overall grade.

Vocational Courses

...BTECs/CTECs/AAQs/T Levels are divided into sections called units, and each of these units has different styles of assessments. Your teacher will work with you and guide you as you progress through your course. This allows you to break your learning and assessments into manageable, bitesize chunks. You will study a topic and then be assessed before moving on to the next topic and being assessed again. You will follow this style of learning throughout your vocational course, which will include different types of assessments to offer you variety and help you apply what you learn in the classroom to practise. All of the chunks of assessments throughout your studies will determine your final grade at the end of your course/courses.

SCAN HERE



FOR OUR ONLINE
MIXED STUDY
PROGRAMMES
INFO BOOKLET

KEY INFORMATION



Based on the courses you select for your
'STUDY PROGRAMME'
you will require slightly different entry grades

GENERAL ENTRY CRITERIA

LEVEL 2

3 YEAR STUDY PROGRAMME

4 GCSEs or Vocational equivalents, these MUST include minimum of:

- Grade 3 in English Language
- Grade 2 in Maths

Our 3 year programmes offer 1 year initial support for students needing to retake GCSE Maths, English or both and, gain other GCSE equivalent courses in preparation for our Level 3 Programmes.

LEVEL 3

STUDY PROGRAMME

5 academic GCSEs, a minimum of 3x grade 5 and 2 x grade 4. These should include English Language and Maths.

VOCATIONAL PROGRAMME

5 GCSEs at grade 4. These should include English Language. GCSE Maths is required at grade 3 or above.

ENTRY CRITERIA BY DEPARTMENT

History, Politics, Geography & Philosophy	4
Art, Design & Fashion	4
Business, Finance, Economics & Travel	5
English & Modern Foreign Languages	5
Health, Social & Child Care	6
IT, Computing & Esports	6
Media & Film	7
Performing Arts, Drama & Music	7
Psychology, Sociology, Criminology & Law	8
Science, Maths & Engineering	8
Sport & Public Services	10

Classical Civilisation, History, Politics, Geography, Philosophy and Ethics

Classical Civilisation (A Level Level 3 Single)	Level 3 general entry criteria + GCSE English Language grade 5 and, a grade 4 in GCSE History, if taken. If History was not taken at GCSE, a grade 5 in another traditional written subject, for example English Literature would be considered.
History (A Level Level 3 Single)	Level 3 general entry criteria + GCSE English Language grade 5 and, a grade 4 in GCSE History, if taken. If History was not taken at GCSE, a grade 5 in another traditional written subject, for example English Literature would be considered.
Politics (A Level Level 3 Single)	Level 3 general entry criteria + grade 5 in English Language & grade 4 in another traditional written subject, for example History or English.
Geography (A Level Level 3 Single)	Level 3 general entry criteria + grade 5 in GCSE English & Maths grade 4 in GCSE Geography if taken if not, grade 4 in GCSE Science would be considered.
Philosophy and Ethics (A Level Level 3 Single)	General Entry Requirements + at least a Grade 5 in English Language and a Grade 5 in another essay-based subject.

Art, Craft, Design and Fashion

Craft & Design (CTEC Level 3 Single)	Level 3 general entry criteria + grade 4 in a relevant GCSE Art Subject or, a portfolio of work for consideration.
Fine Art (A Level Level 3 Single)	Level 3 general entry criteria + grade 4 in a relevant GCSE Art Subject or, a portfolio of work for consideration.
Fashion & Textiles (A Level Level 3 Single)	Level 3 general entry criteria + grade 4 in a relevant GCSE Art Subject or, a portfolio of work for consideration.
Graphics (A Level Level 3 Single)	Level 3 general entry criteria + grade 4 in a relevant GCSE Art Subject or, a portfolio of work for consideration.
Photography (A Level Level 3 Single)	Level 3 general entry criteria.
Photography (CTEC Level 3 Single)	Level 3 general entry criteria.
Art, Media & Design (Foundation Diploma Level 3-4 Triple)	1 A Level or equivalent in Art-Related subject, in addition to other Level 3 qualifications. A portfolio of work is required.

Business, Finance, Economics and Travel

Business (BTEC Level 2 Double)	Level 2 general entry criteria.
Travel and Tourism (BTEC Level 2 Double)	Level 2 general entry criteria.
Business (BTEC Level 3 Single & Double)	Level 3 general entry criteria.
Business Studies (A Level Level 3 Single)	Level 3 general entry criteria + grade 5 in English Language.
Economics (A Level Level 3 Single)	Level 3 general entry criteria + grade 6 in both GCSE English Language and Maths.
Finance (T Level Level 3 Triple)	Level 3 General Entry Criteria + a 5 in English Language and a 5 in Maths.
Management & Administration (T Level Level 3 Triple)	Level 3 General Entry Criteria + a 5 in English Language and a 5 in Maths.
Travel & Tourism (BTEC Level 3 Single)	Level 3 general criteria.

English & Modern Foreign Languages

English Language (GCSE Level 2 Single)	Level 2 general entry criteria + grade 3 in English Language.
English Language (A Level Level 3 Single)	Level 3 general entry criteria + grade 5 in English Language.
English Literature (A Level Level 3 Single)	Level 3 general entry criteria + grade 5 in English Language & grade 6 in English Literature.
French (A Level Level 3 Single)	Level 3 general entry criteria + grade 5 in English Language & grade 6 in French. It is a requirement of this course to participate in and to be confident when speaking the language.
Spanish (A Level Level 3 Single)	Level 3 general entry criteria + grade 5 in English Language & grade 6 in Spanish. It is a requirement of this course to participate in and to be confident when speaking the language.

Health, Social, Education and Early Years

Childcare Early Years Practitioner (NCFE Level 2 Double)	Level 2 general entry criteria.
Health & Social Care (CTEC Level 2 Double)	Level 2 general entry criteria. Commitment to 2-week placement is required A commitment to a work placement as part of this course is required therefore, an Enhanced DBS Disclosure is needed - which the College will fund.
Education and Early Years (T Level Level 3 Triple)	Level 3 general entry criteria + a grade 4 Maths. A commitment to a work placement as part of this course is required therefore, an Enhanced DBS Disclosure is needed - which the College will fund.
Health & Social Care (AAQ Level 3 Single)	Level 3 general entry criteria. A commitment to a work placement as part of this course is required therefore, an Enhanced DBS Disclosure is needed - which the College will fund.
Health & Social Care (CTEC Level 3 Double & Triple)	Level 3 general entry criteria. A commitment to a work placement as part of this course is required therefore, an Enhanced DBS Disclosure is needed - which the College will fund.
Health (T Level Level 3 Triple)	Level 3 general entry requirement + a grade 4 in Maths and grade 5 in Science. A commitment to a work placement as part of this course is required therefore, an Enhanced DBS Disclosure is needed - which the College will fund.

IT, Computing and Esports

IT (BTEC Level 2 Double)	Level 2 general entry criteria.
IT (AAQ Level 3 Single)	Level 3 general entry criteria + grade 4 in Maths and English Language.
Computer Science (A Level Level 3 Single)	Level 3 general entry criteria + grade 6 in Maths & grade 5 in Science. A grade 5 in GCSE Maths would be considered if an applicant achieved an average GCSE score of 5.3.
Digital Games Design (BTEC Level 3 Single & Triple)	Level 3 general entry criteria.
Digital Software Development (T Level Level 3 Triple)	5 GCSE's grade 4 or above including a grade 5 in Maths.
Esports (BTEC Level 3 Single)	Level 3 general entry criteria.
Cyber Security (AAQ Level 3 Single)	Level 3 general entry criteria.

Media, Film and Digital Games Design

Creative Media (BTEC Level 2 Double)	Level 2 general entry criteria.
Digital Film & TV Production (BTEC Level 3 Single & Triple)	Level 3 general entry criteria.
Film Studies (A Level Level 3 Single)	Level 3 general entry criteria + grade 5 in a traditional written subject, for example History or English Literature.

Performing Arts, Drama, Dance and Music

Dance (A Level Level 3 Single)	Level 3 general entry criteria + Dance grades in ISTD/IDTA/RAD or equivalent or completed GCSE Dance to a grade 4 or BTEC Performing Arts Dance pathway L2M.
Dance (BTEC Level 3 Single)	5 GCSE's grade 4 or above including English. GCSE Dance desirable. Significant dance training/extra-curricular would be accepted.
Drama & Theatre Studies (A Level Level 3 Single)	Level 3 general entry criteria + grade 5 in English Language. Must be willing to perform in front of an audience.
Performing Arts (BTEC Level 3 Single & Double)	Level 3 general entry criteria. Short audition as part of bridging work.
Music (A Level Level 3 Single)	Level 3 general entry criteria + grade 6 GCSE Music ABRSM Grade 5 in Theory and Practical Instrument is also required.
Music (BTEC Level 3 Single)	Level 3 general entry criteria + grade 4 in GCSE Music or BTEC L2 Music Merit Must play an instrument or sing to a high standard - need to be able to read music to at least ABRSM Grade 1 theory or equivalent.

Psychology, Sociology, Criminology and Law

Applied Psychology (BTEC Level 3 Single)	Level 3 general entry criteria this must include a grade 4 in Maths, English Language and Science.
Psychology (A Level Level 3 Single)	Level 3 general entry criteria + grade 5 in Maths, English Language & Science (Biology or Combined Science).
Criminology (WJEC Level 3 Single)	Level 3 general entry criteria + grade 4 in an additional traditional written subject, for example English Literature or History.
Sociology (A Level Level 3 Single)	Level 3 general entry criteria + grade 5 in English Language & grade 4 in an additional traditional written subject, for example History, Geography or Religious Studies, excluding English Literature.
Law (A Level Level 3 Single)	Level 3 general entry criteria + grade 5 in English Language & Grade 4 in an additional traditional written subject, for example English Literature or History.
Applied Law (BTEC Level 3 Single)	Level 3 general entry criteria + grade 4 in an additional traditional written subject, for example English Literature or History.

Science, Maths and Engineering

Maths (GCSE Level 2 Double)	Level 2 general entry criteria.
Maths (A Level Level 3 Single)	Level 3 general entry criteria + Grade 6 or above in Maths and an average GCSE Score of 5.5 or above Or Grade 8 or above in Maths.
Further Maths (A Level Level 3 Double)	Level 3 general entry criteria + grade 7 in Maths and an average GCSE Score of 6.5.
Core Maths (Certificate Level 3 Single)	Level 3 general entry criteria + grade 5 in Maths. <i>Taken alongside 3 other courses.</i> (Core Maths is equivalent to an AS Level)
Biology (A Level Level 3 Single)	Level 3 general entry criteria + grade 6 in Maths & Biology or, double science. We will consider grades on an individual basis which do not meet our requirements only where your average GCSE score is above 6.5. It's advisable to combine Biology and Chemistry to support this course.

Chemistry (A Level Level 3 Single)	<p>Level 3 general entry criteria + grade 6 in Maths & Chemistry or, double science.</p> <p>We will consider grades on an individual basis which do not meet our requirements only where your average GCSE score is above 6.5.</p> <p>It's advisable to study another Science and/or Maths alongside this course.</p>
Physics (A Level Level 3 Single)	<p>Level 3 general entry criteria apply + grade 6 or above in Physics or, 66 in Double Science.</p> <p>A Level Maths must be taken alongside this course.</p> <p>A Level Maths entry criteria must be met.</p>
Applied Human Biology (AAQ Level 3 Single)	Level 3 general entry criteria + Science (Biology / Chemistry / Physics) as 4/4/4 or combined Science at 4s or above or, a Merit in a vocational Science qualification.
Applied Science (AAQ Level 3 Single)	Level 3 general entry criteria + Science (Biology / Chemistry / Physics) as 4/4/4 or combined Science at 4s or above or, a Merit in a vocational Science qualification.
Diploma in Applied Science (BTEC Level 3 Double)	Level 3 general entry criteria + Science (Biology / Chemistry / Physics) as 4/4/4 or combined Science at 4s or above or, a Merit in a vocational Science qualification.
Engineering (BTEC Level 2 Double)	<p>This course requires general level 2 entry requirements, a minimum of 4 GCSEs and vocational equivalents which must include:</p> <ul style="list-style-type: none"> - Grade 3 in Science - Grade 3 in Maths - Grade 4 in English Language
Engineering Applied Science (BTEC Level 3 Double)	Level 3 general entry criteria + grade 4 in both Maths and English Language + Science (Biology / Chemistry / Physics) as 4/4/4 or combined Science as 4s or above.
Engineering (CTEC Level 3 Double)	General entry criteria + grade 5 in Maths & Combined Science or Physics, or, a Merit in a vocational Science qualification.

Sport and Public Services

Public Services (BTEC Level 2 Double)	Level 2 general entry criteria.
Uniformed Protective Services (BTEC Level 3 Single & Double)	Level 3 general entry criteria.
Sport (BTEC Level 3 Single & Double)	Level 3 general entry criteria + 4 grade PE or a Merit in an equivalent (if taken), grade 44 in combined Science or, 4 in Biology and Chemistry if studied separately.
Physical Education (A Level Level 3 Single)	Level 3 general entry criteria + grade 5 in GCSE PE or equivalent (if taken), English Language and Science. You are required to compete in sport competitively for this course.
GTFC Football Shadow Scholarship (BTEC Level 3 Triple)	General entry criteria apply. You are required to complete an ability assessed trial for entry on to this course.

Please note:

- Course entry requirements are correct at this time but, may be subject to change without prior notice should circumstances dictate
- Courses will only run subject to minimum enrolment numbers
- At enrolment students may be advised of more suitable courses, if appropriate.

USEFUL LINKS



 OUR 2025/2026 COURSE GUIDE



OUR COURSES 

CONTACT INFORMATION



Email

school.liaison@franklin.ac.uk - for events and school activities
admissions@franklin.ac.uk - for admissions queries

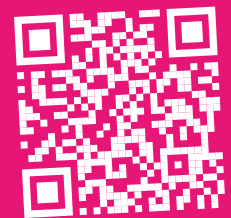
Phone

01472 875000

WE'RE HERE TO HELP

Study Programme Entry Criteria

APPLY HERE



 01472 875 000

 admissions@franklin.ac.uk

 www.franklin.ac.uk

    @FranklinGrimsby

Franklin
Sixth Form College

#SEEOURFUTURE