

**WELCOME  
TO FRANKLIN**





# College Leadership Team



**Wendy Ellis**

Principal & CEO



**Jo North**

Deputy Principal



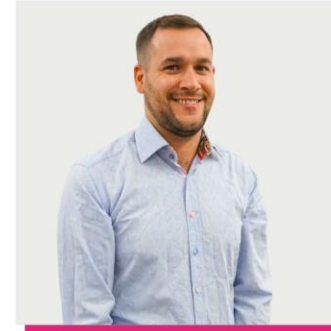
**Gary Thomas**

Vice Principal TLA



**Gemma Scott**

Vice Principal Curriculum



**Craig Burkitt**

Associate Principal Quality,  
Data & Standards



**Stephen Neville**

Finance Director



**CJ Stephens**

Associate Principal School  
Partnerships and Student  
Experience



**Emma Swinburn**

Associate Principal  
CfPD & PPD  
Employability



**Vicki Jones**

Associate Principal  
Inclusion & Wellbeing



**Helen Forman**

Associate Principal  
Pastoral & Progression



**Shane Harrison**

Associate Principal  
Behaviours, Attitudes  
& Belonging

# Heads of Departments

## **Andy Lockwood**

Psychology, Sociology,  
Criminology and Law

## **Gren Cropper**

Digital

## **Tim Lowe**

Sports and Uniformed  
Protective Services

## **George Lamb**

Art, Craft, Design  
and Fashion

## **Aaron Lewis**

Maths

## **Alison Traill**

Performing Arts, Drama,  
Music and Dance

## **Jaime Hansen**

Business, Finance,  
Economics and Travel

## **Peter Callaway**

Science and  
Engineering

## **Rickeana McCurdy**

English, Modern Foreign  
Languages and Humanities

## **Jennifer Carter**

Health, Social, Education  
and Early Years

# VISION & VALUES

**To provide the best possible life chances  
for our community**

**A S P I R E**

Aspirational

Supportive

Persistent

Inclusive

Respectful

Even &  
Consistent

# Parents as Partners

- We value your support
- Please ensure we have your most up-to-date contact details
- If at any time you need to contact the college, please contact the most relevant staff members:
  - **Curriculum concerns** – Subject Teacher
  - **General College query** – Progress Coach
  - **Attendance reporting** - Reception
- We will send you a half-termly Parent Newsletter with College updates
- Please visit our website to keep up to date with the latest information, including our fantastic weekly Careers and Progression Newsletter, term dates, student support, and lots of key information for parents
- A link to this presentation, along with all the key information you need, will be available at the end of this event.

# Student Performance Indicator Reports (PIs)

- Throughout the year, there are five PI points when Subject Teachers track students' overall progress
- As a parent, you will receive **Student Progress Reports in December and April** to keep you informed on your child's progress
- We are here to support both you and your child throughout the year.

**Online Consultation Evenings - Dates for your Diary - Year 1 / Year 5: 19th March 2026**

Overall, College Attendance: .....

Course	Attendance (%)	Minimum Expected Grade (MEG)	Predicted Grade (PG)	Effort Grade (EG)	Skills Grade (SG)
A Level Mathematics	98	B	B	5	
A Level History	97	B	A	5	
BTEC Applied Psychology	97	D*	D*	5	
ASPIRE YEAR 2	99			5	5



<b>MONDAY</b>	<b>BTEC APPLIED LAW</b> 90 MINS 09:00 - 10:30	<b>BREAK</b>	<b>BTEC APPLIED LAW</b> 90 MINS 10:45 - 12:15	<b>LUNCH</b> 45 MINS	<b>WJEC CRIMINOLOGY</b> 90 MINS 13:00 - 14:30	<b>TRAVEL TIME</b>	<b>INDEPENDENT STUDY</b> 90 MINS 14:35 - 16:05
---------------	---	--------------	---	-------------------------	---	--------------------	--

<b>TUESDAY</b>	<b>A LEVEL PSYCHOLOGY</b> 90 MINS 09:00 - 10:30	<b>BREAK</b>	<b>A LEVEL PSYCHOLOGY</b> 90 MINS 10:45 - 12:15	<b>LUNCH</b> 45 MINS	<b>INDEPENDENT STUDY</b> 90 MINS 13:00 - 14:30	<b>BREAK</b>	<b>INDEPENDENT STUDY</b> 90 MINS 14:35 - 16:05
----------------	---	--------------	---	-------------------------	--	--------------	--

<b>WEDNESDAY</b>	<b>INDEPENDENT STUDY</b> 90 MINS 09:00 - 10:30	<b>BREAK</b>	<b>INDEPENDENT STUDY</b> 90 MINS 10:45 - 12:15	<b>LUNCH</b> 45 MINS	<b>BTEC APPLIED LAW</b> 90 MINS 13:00 - 14:30	<b>TRAVEL TIME</b>	<b>PERSONAL &amp; PROFESSIONAL DEVELOPMENT</b> 60 MINS 14:35 - 15:35
------------------	--	--------------	--	-------------------------	---	--------------------	--

<b>THURSDAY</b>	<b>INDEPENDENT STUDY</b> 90 MINS 09:00 - 10:30	<b>BREAK</b>	<b>ASPIRE</b> 60 MINS 11:15 - 12:15	<b>LUNCH</b> 45 MINS	<b>INDEPENDENT STUDY</b> 90 MINS 13:00 - 14:30	<b>TRAVEL TIME</b>	<b>A LEVEL PSYCHOLOGY</b> 90 MINS 14:35 - 16:05
-----------------	--	--------------	---	-------------------------	--	--------------------	---

<b>FRIDAY</b>	<b>WJEC CRIMINOLOGY</b> 90 MINS 09:00 - 10:30	<b>BREAK</b>	<b>WJEC CRIMINOLOGY</b> 90 MINS 10:45 - 12:15	<b>LUNCH</b> 45 MINS	<b>INDEPENDENT STUDY</b> 90 MINS 13:00 - 14:30
---------------	---	--------------	---	-------------------------	--

## Mock Weeks

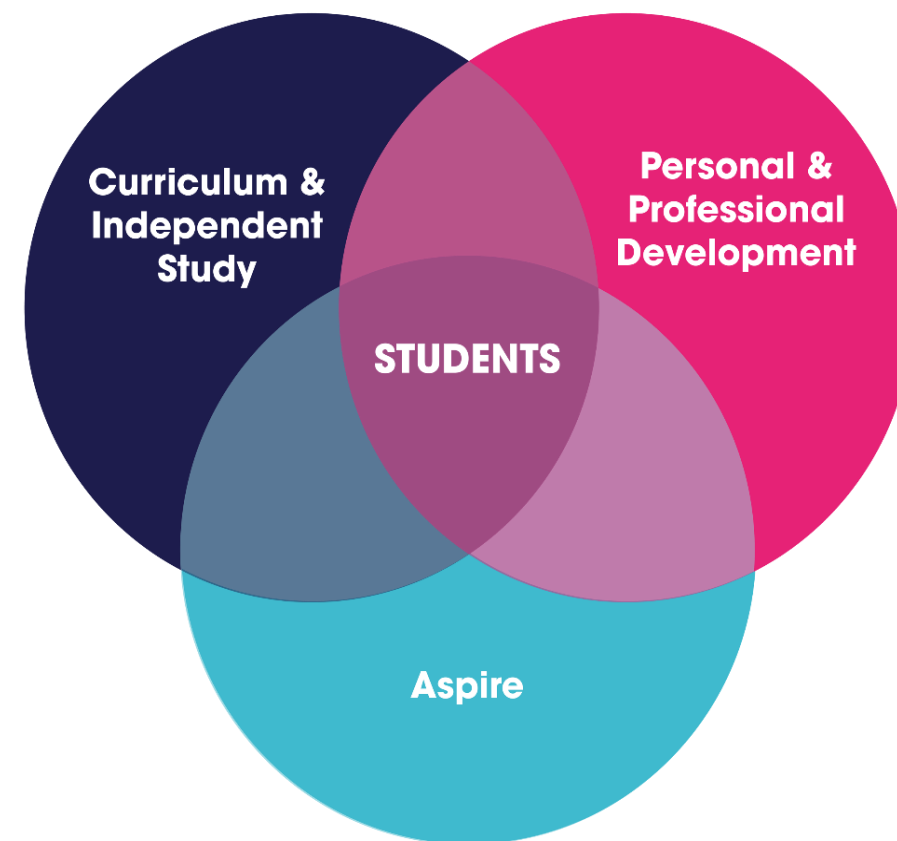
Mon – Wed W/C 24<sup>th</sup> November

Mon – Wed W/C 9<sup>th</sup> March



# Independent Study

INDEPENDENT STUDY	YEAR 1 Hours per subject or teacher per week	YEAR 2 Hours per subject or teacher per week	YEAR 5 Hours per subject or teacher per week
1st Half Term	2 Hours	4.5 Hours	1 Hour
October half term break and reading week			
2nd Half Term	3 Hours	4.5 Hours	1.5 Hours
Christmas Holidays			
3rd Half Term	4 Hours	4.5 Hours	2 Hours
February Half Term			
4th Half Term	4.5 Hours	4.5 Hours	2.5 Hours
Easter Holidays			
5th Half Term	4.5 Hours	4.5 Hours	3 Hours
May Half Term Break			
6th Half Term	4.5 Hours	Exams	3 Hours



# Studying a Mixed Programme @Franklin



**FOR OUR ONLINE MIXED STUDY PROGRAMMES INFO BOOKLET**



## A Level

**START OF COURSE, SETTING  
ACADEMIC FOUNDATION**

**FIRST INTERNAL ASSESSMENTS**

**END-OF-YEAR MOCK EXAMS**

**UNIVERSITY / APPRENTICESHIP  
APPLICATIONS**

**PRE-FINAL EXAM REVISION**

**FINAL EXAMS**

### YEAR 1

**SEPT - OCT**

**DEC - JAN**

**MAY - JUNE**

### YEAR 2

**NOV - JAN**

**APR - MAY**

**MAY**

## Vocational

**START OF FIRST UNIT**

**SUBMISSION OF FIRST COURSEWORK UNITS OR  
FIRST EXAM**

**FINAL DEADLINES FOR FIRST-YEAR UNITS**

**UNIVERSITY / APPRENTICESHIP APPLICATIONS  
EXTERNAL ASSESSMENTS**

**FINAL COURSE WORK SUBMISSIONS**

**FINAL MODERATION**

# Key Teams - Progress Coaches

All students are assigned a dedicated **Progress Coach** to support them throughout their studies.

**Aspire** is a collaboration between our **Progress Coaches**, **Centre for Professional Development (CfPD) Team**, and **Personal and Professional Development (PPD) Team**.

Attendance at Aspire and PPD is a mandatory element of a student's programme.

## The Aspire Programme will:

- Help students explore options and plan for next steps after Franklin
- Support students to build Personal and Professional skills
- Develop awareness of real-world issues and encourage students to become more active members of society.



**Progress Coaches**



# Key Teams - Learning Support

We have extensive experience in supporting students with a wide range of physical disabilities and learning difficulties. College staff receive specialist training in this area, and we will do our best to meet individual needs.

Students can contact our **Learning Support Team** if they have any special educational needs or disabilities (SEND) that affect their learning while at College.



**Learning Support Team**



# Key Teams - Careers

- Careers 1-1s
- Work experience
- Volunteering
- Internships
- Mentoring
- Trips
- Sector leading conferences
- Careers events
- PPD



**CAREERS TEAM**



# Personal Development



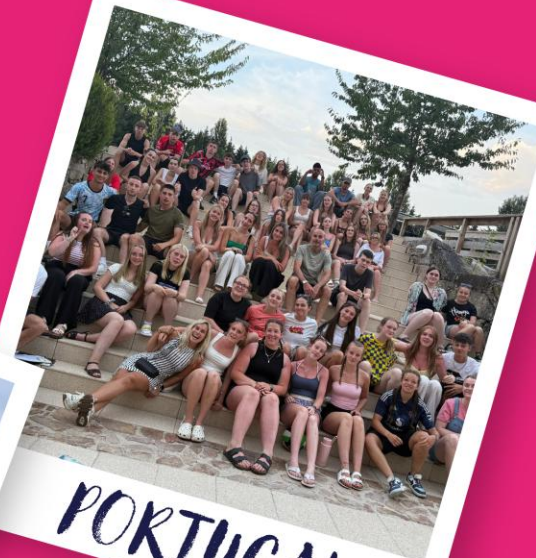
DUBAI



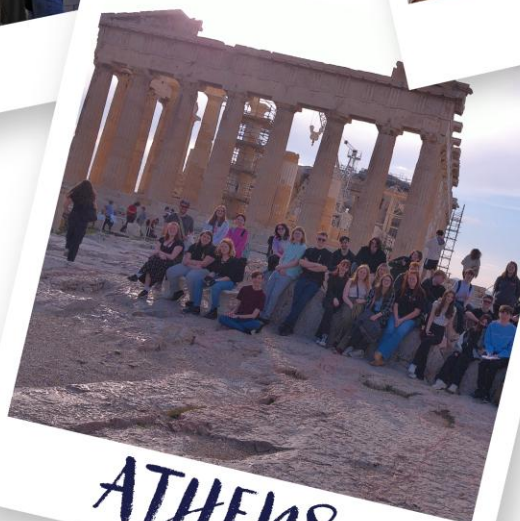
ROME



ITALY



PORTUGAL



ATHENS



PARIS



MALTA



# STUDENT SUPPORT

## **PROGRESS COACH TEAM**

Our team offer pastoral support, progression advice and support with employability skills. The team are the first port of call for many other areas, whilst monitoring attendance and positive behaviour.

## **SKILLS @ DESK**

Our team will help students catch up on lost learning and provide extra support if needed on study areas and support as required.

## **SAFEGUARDING TEAM**

We're fully committed to Safeguarding and Child Protection and promoting the wellbeing of our students.

## **STUDENT FINANCE TEAM**

Financial support is available to help with food, transport, trips and equipment.

## **RECEPTION**

Always on hand to help students!

## **LEARNING SUPPORT TEAM**

The team have vast experience in supporting students with a wide range of medical conditions, physical disabilities and additional learning needs.

## **CENTRE FOR PROFESSIONAL DEVELOPMENT**

Offering one-to-one career appointments, impartial careers guidance, work experience opportunities and drop-in support sessions, and hundreds of links with local and regional employers.

## **PERSONAL & PROFESSIONAL DEVELOPMENT**

Our dedicated team supports students to develop personal and professional skills, discover new experiences and develop new talents and interests through our exceptional range of activities, clubs and societies.

## **TEAM THRIVE**

Our Wellbeing Team are here to listen without judgement and to provide dedicated support using the Thrive Model.

## **STUDY SKILLS TEAM**

Students can book an appointment with our Study Skills Coaches, Student Support Mentors, or our new Academic Improvement Mentors (AIMs). This will develop subject specific support and effective study skills.



**SCAN HERE**

**STUDENT  
SUPPORT  
BOOKLET**

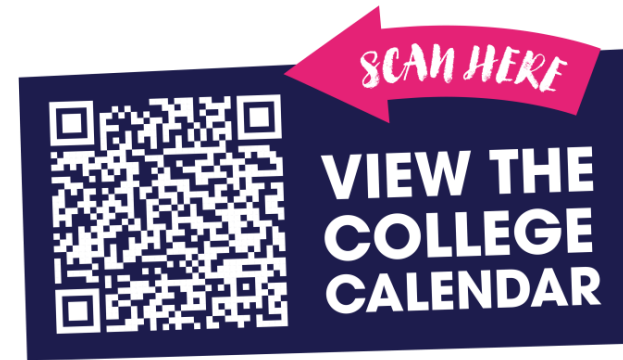






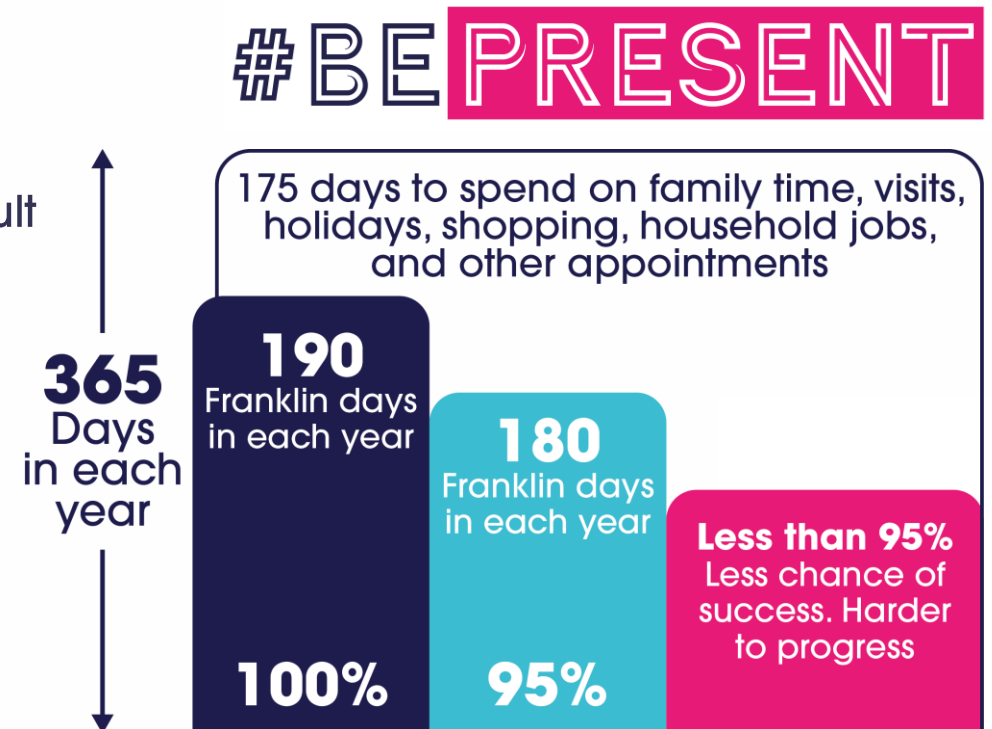
# Bring Your Own Device

Bring your own device (or BYOD) means that, instead of using one of our laptops, desktop computers, or Macs, students bring in their own laptop or tablet.



# Attendance and Holidays

- Exemplary attendance is vital at Franklin. Students' wellbeing and future life chances are enhanced through full attendance on their whole Study Programme - this includes studying at Franklin as well as the other fantastic opportunities we offer as part of College life
- Attendance marks are gained from being in lessons and college activities such as ASPIRE and Independent Study
- We support all students with the attitude of hard work, motivation, commitment, and respect
- We expect full commitment from students to their study programmes
- Holidays during term time are not authorised and will result in intervention, which can include removal from the College. You can find further information on our website.



# Teacher Intervention (TI) Model

---

## Learning Behaviour

**Teacher Intervention 1 - Encouraging Engagement and Progress**



**Teacher Intervention 2 - Fostering Positive Learning Behaviour**



**Intervention by Head/Assistant Head of Department**



**Parents as Partners**



**Withdrawal and Appeals**

FRANKLIN EXPECTATIONS

**ABC**



# Stand Out Student Awards

STANDOUT  
STUDENT  
AWARDS





# The Campus

The exciting £3.2 million expansion will include:

- Eight state-of-the-art classrooms
- 160-seater auditorium
- New main entrance and reception area
- Plan to be completed in December 2025.



# Thank You

---

We would like to thank you for joining us this evening  
If you have any questions, please come and speak to us this evening.

